



WHAT'S NEXT AFTER AMS? STRATEGY OF LITHUANIA POST 2027

TOMAS ORLICKAS
Deputy Director
CTO / COO
National Paying Agency



0. AREA MONITORING SYSTEM

- S1/2 MARKERS FOR SPECIFIC LAND USE OR AGRICULTURAL ACITIVITY
- S2 ENHANCED 1-METER RESOLUTION IMAGES
- AUTOMATIC LPIS LAND COVER CLASSIFICATION
- AUTOMATIC DELINEATION OF PARCEL BOUNDARIES
- CROP AND OBJECT CLASSIFICATION FROM GEOTAGGED-PHOTOS



1. AREA MONITORING & SENSORS SYSTEM

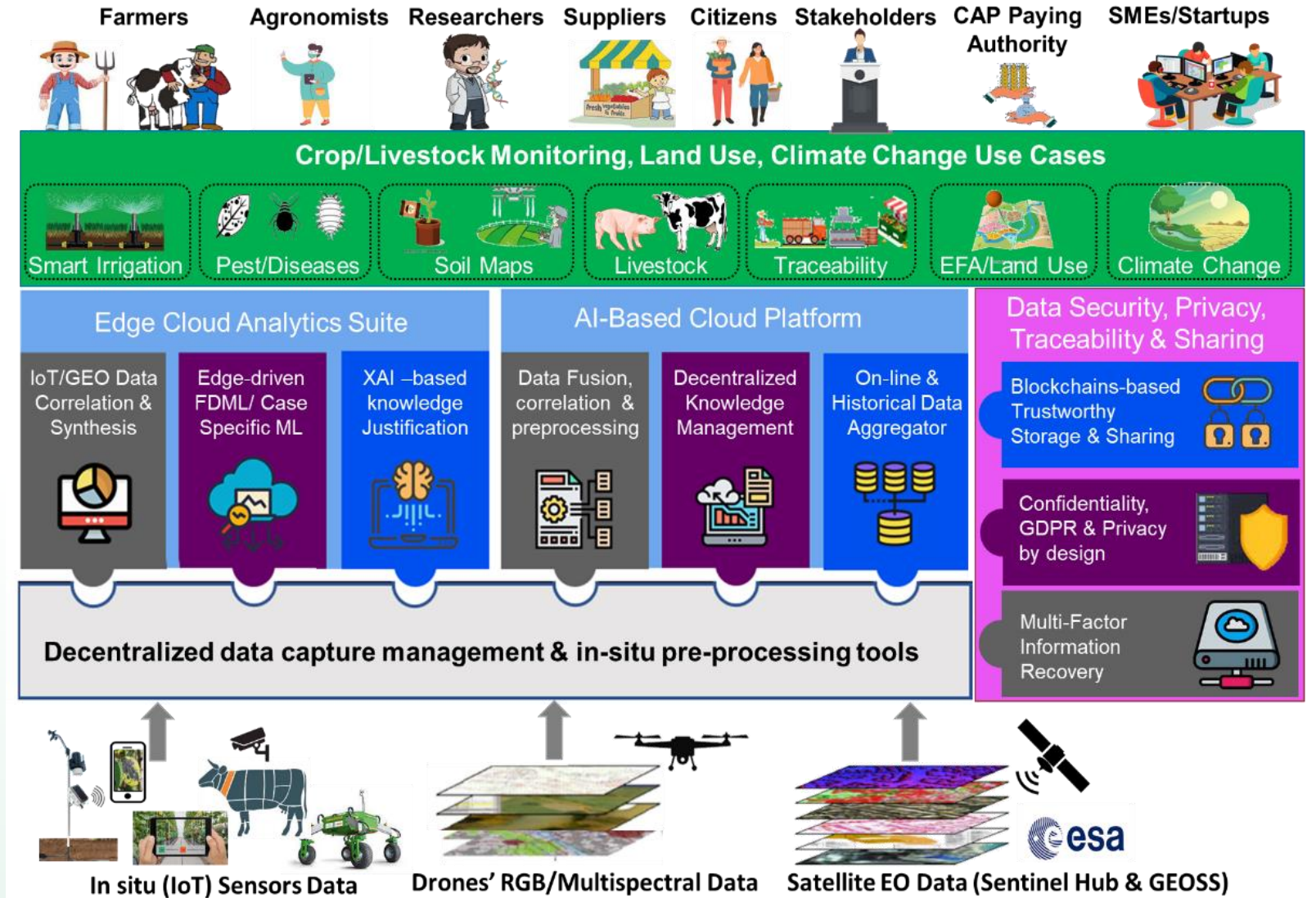
- HORIZON EUROPE “AGRIDATAVALUE”



AgriDataValue



Focused on advancing digital transformation and agri-environmental monitoring in agriculture with the aim to create an innovative, distributed platform for smart farming, using big data to optimize production, enhance environmental sustainability, and ensure fair income for farmers.



2. AREA & CLIMATE CHANGE MONITORING SYSTEM

- Identification and monitoring of floods, draughts and forest fires
- Identification of land areas affected by soil erosion
- Identification of fertilizer runoff risk zones
- Assessment of soil moisture
- Assessment of crop damages (due to summer storms)
- Calculation of crop yield zones and forecasting of yield
- Calculation of organic carbon and clay content

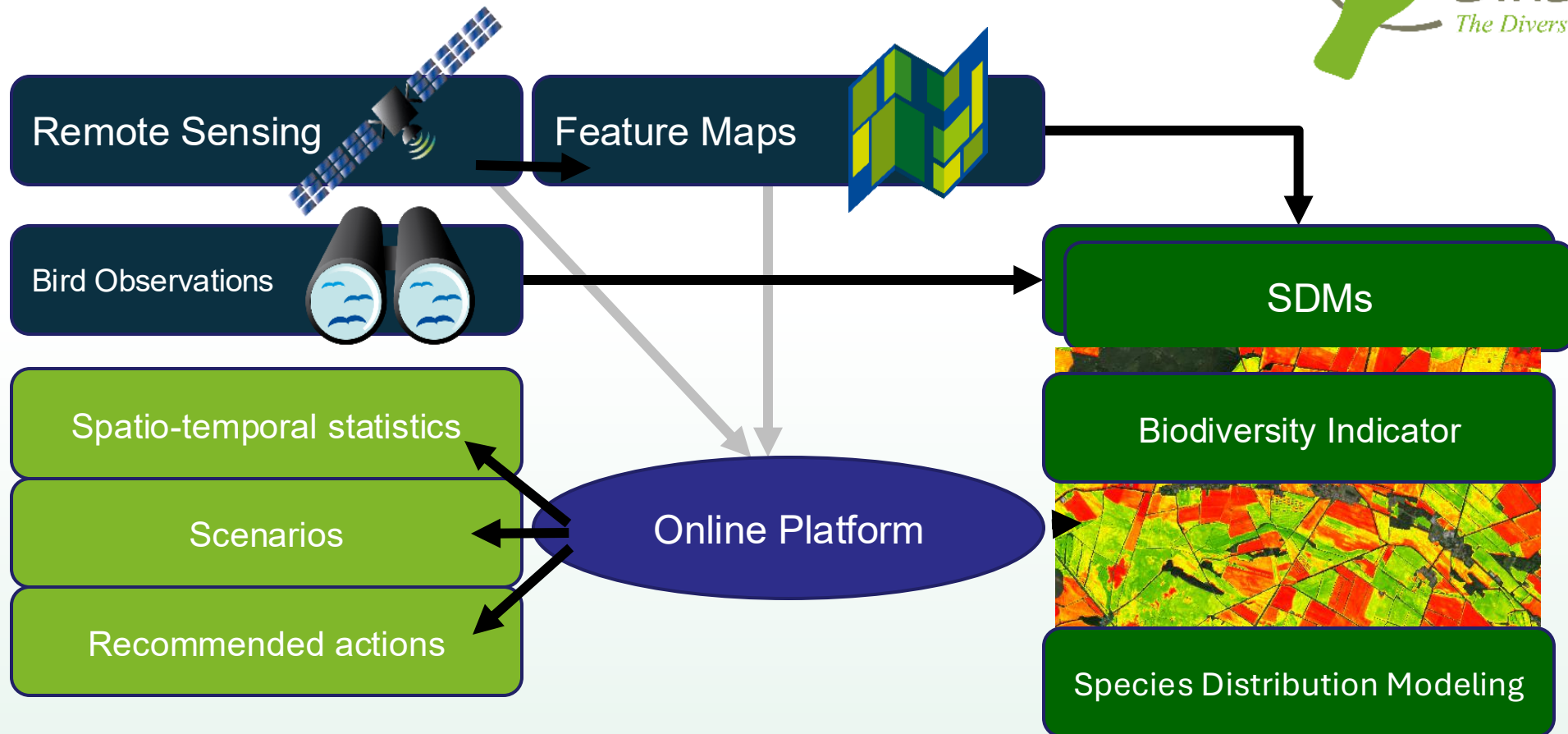
Projects (platforms, based on Sentinel data):

- **The Recovery and Resilience Facility Fund “AMS 2.0”**
- [HORIZON 2020 "ENVISION"](#)
- [HORIZON 2020 “EIFFEL”, platform](#)



3. AREA MODELING & MONITORING SYSTEM

- HORIZON EUROPE “BIRDPWATCH”
- VIDEO & BIRDS



3. AREA MODELING & MONITORING SYSTEM

Target Bird Species

We selected ten bird species from the european [Farmland Bird Index \(FBI\)](#) to begin with. The choice is based on the abundance in our test areas. Additionally we wanted to cover as diverse habitats as possible. These are the first species for which BirdWatch will generate results:



Eurasian Skylark
Alauda arvensis
Peter Kennerley
20 May 2020
Suffolk, England, United Kingdom
CornellLab
Macaulay Library ML 237452191
eBird S69357175



Yellowhammer
Emberiza citrinella
Nigel Voaden
15 Dec 2017
Fife, Scotland, United Kingdom
CornellLab
Macaulay Library ML 78557031
eBird S41099811



Whinchat
Saxicola rubetra
Ian Davies
7 Jun 2015
South Karelia, Finland
CornellLab
Macaulay Library ML 42408031
eBird S23811415



Northern Lapwing
Vanellus vanellus
Yann Kolbeinsson
1 Feb 2016
Norðurland eystra, Iceland
CornellLab
Macaulay Library ML 23897261
eBird S27247900



Meadow Pipit
Anthus pratensis
Anne Carrington-Cotton
9 Jun 2014
Stirling, Scotland, United Kingdom
CornellLab
Macaulay Library ML 204922651
eBird S65081540



European Turtle-Dove
Streptopelia turtur
Marc FASOL
4 Jul 2018
Ávila, Castilla y León, Spain
CornellLab
Macaulay Library ML 204972991
eBird S65086849



Red-backed Shrike
Lanius collurio
Patrick J. Blake
8 May 2016
Bursa, Türkiye
CornellLab
Macaulay Library ML 28345901
eBird S29484468



Black-tailed Godwit
Limosa limosa
Khemthong Tonsakulrungruang
15 Apr 2015
Samut Sakhon, Thailand
CornellLab
Macaulay Library ML 78879151
eBird S22940842

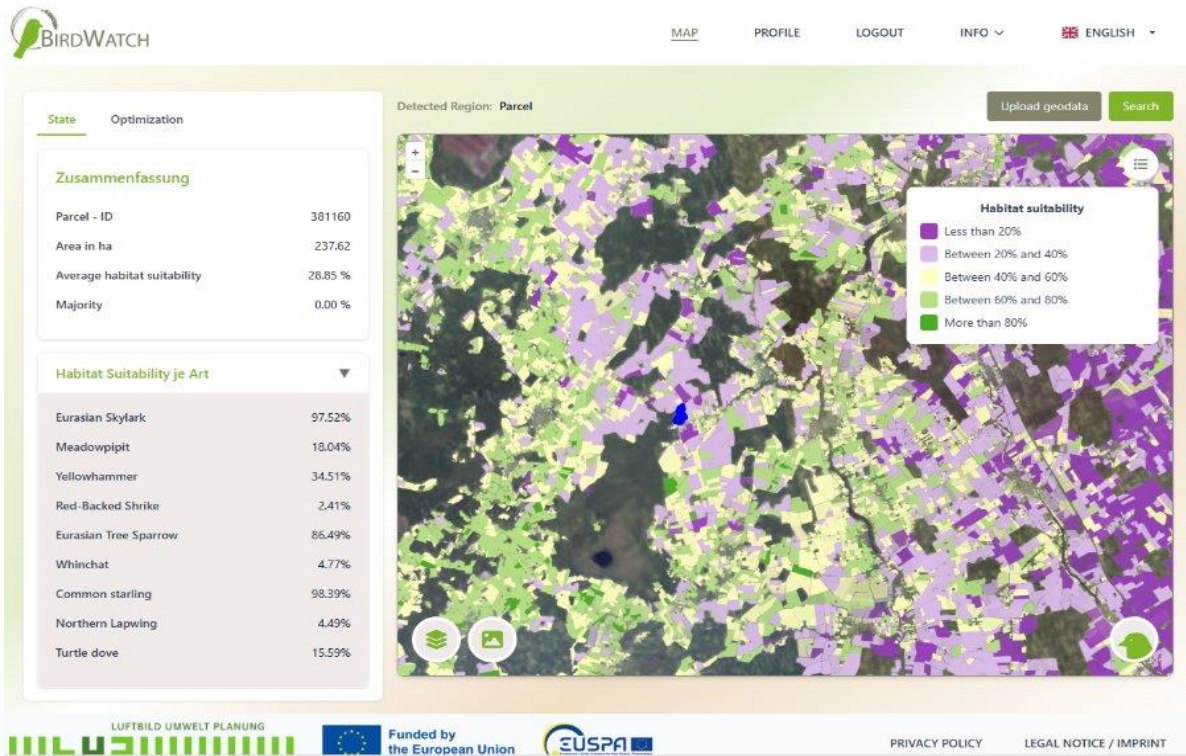


Eurasian Tree Sparrow
Passer montanus
Pavel Štěpánek
22 Dec 2017
Jihomoravský kraj, Czech Republic
CornellLab
Macaulay Library ML 204609651
eBird S64998877



European Starling
Sturnus vulgaris
Josep del Hoyo
18 May 2019
Dobrich, Bulgaria
CornellLab
Macaulay Library ML 205138871
eBird S64823144

3. AREA MODELING & MONITORING SYSTEM

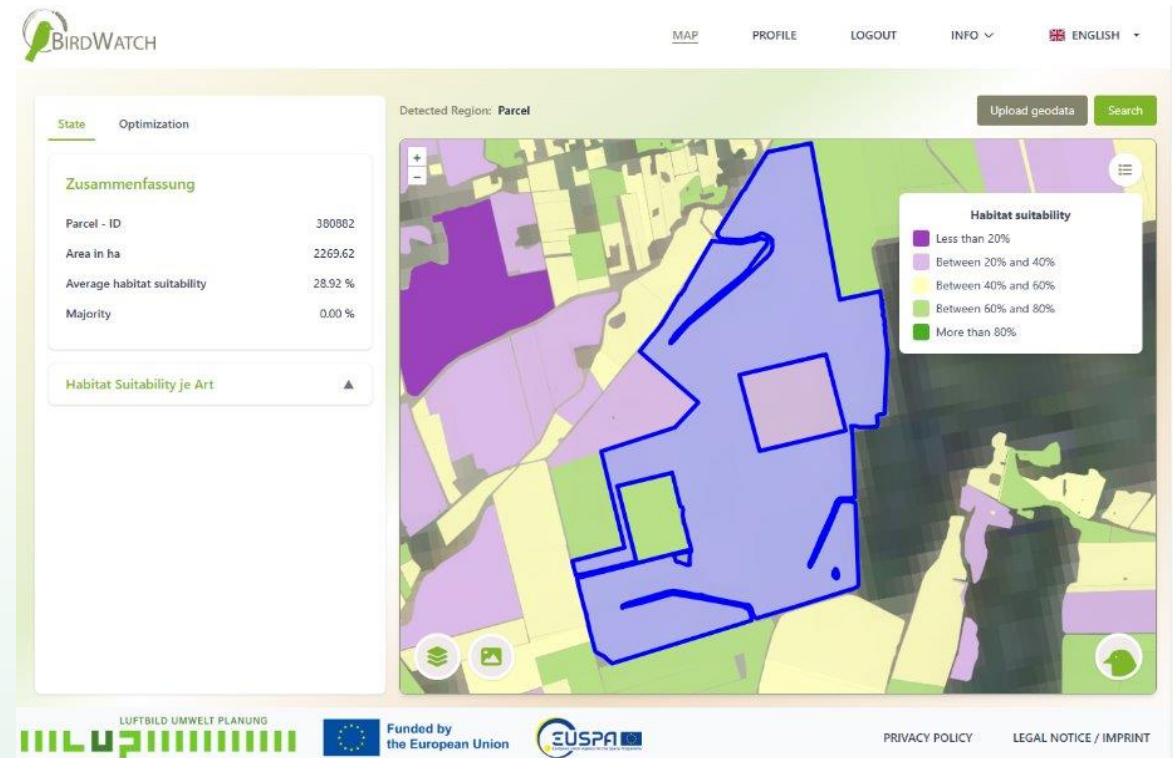


• Which eco-schemes are most suitable to increase the habitat suitability?

• What could be the financial outcome?

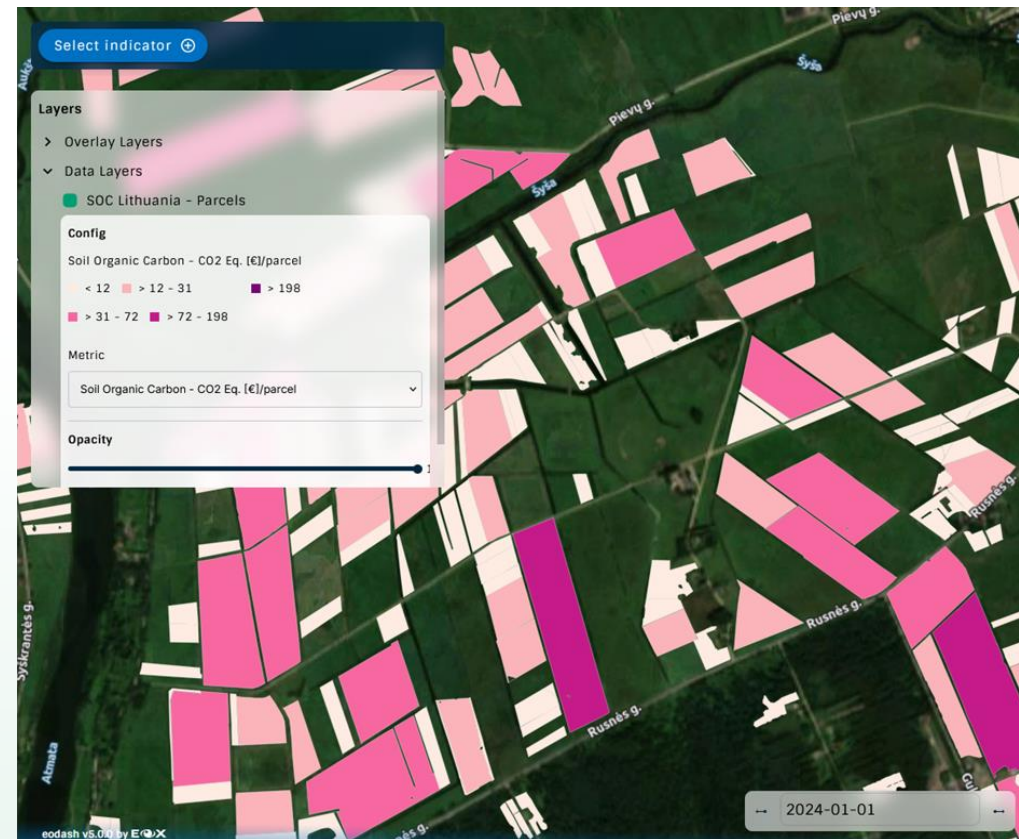
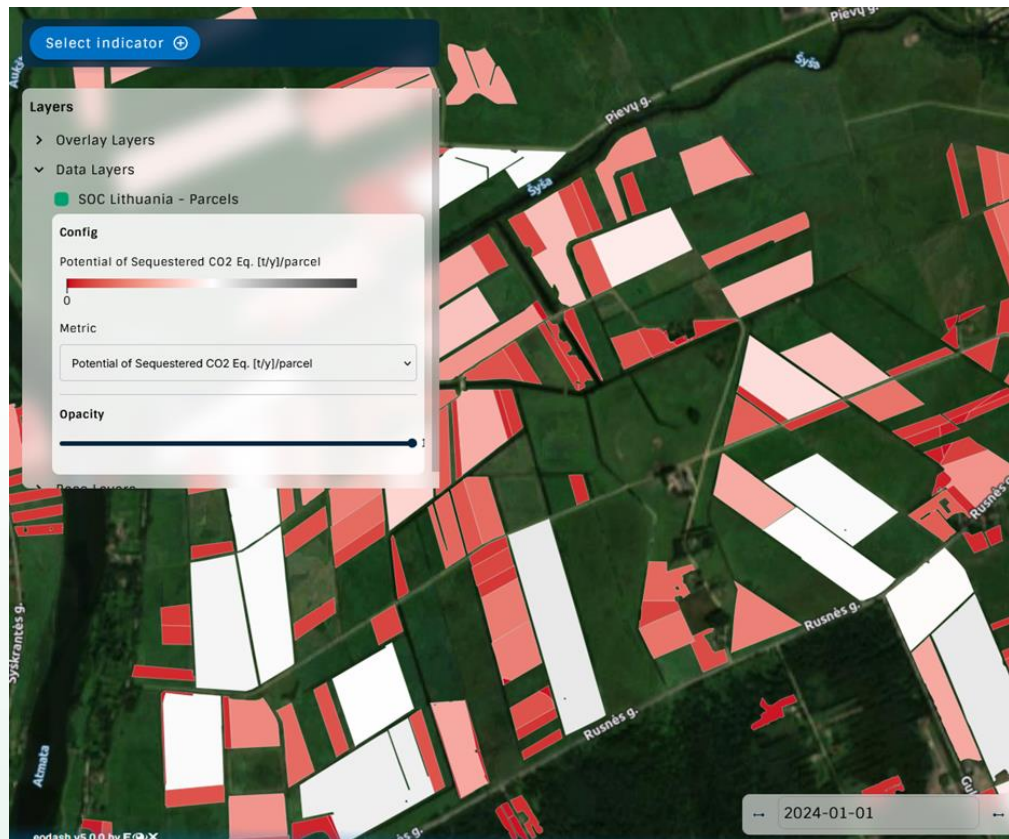
• What is the current state of habitat suitability on my parcels, in my region or in whole Lithuania?

• What can I do to increase the state of habitat suitability for a specific bird?





Lithuanian use case of Natural Capital Solutions management Dashboard to present Carbon & Biodiversity accounting



4. AREA MONITORING & CARBON CREDITS SYSTEM

- LIFE “GREEN FARM FOR LIFE”



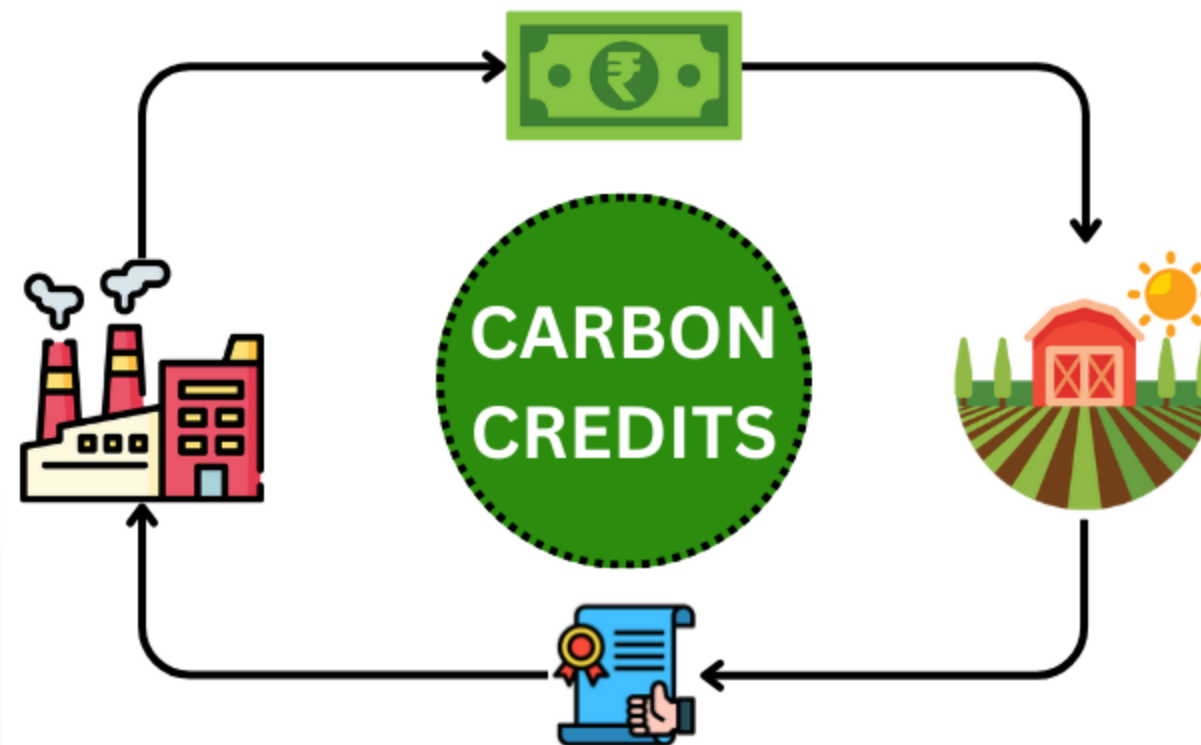
Develop, pilot and validate more accurate and reliable assessment and reporting of GHG in agriculture, forestry and other land use (AFOLU) sector at local (farm), regional and national levels



Design a framework for a national carbon absorption certification - develop and pilot a common technological infrastructure and Carbon Register for GHG balance monitoring, accounting, data exchange and governance



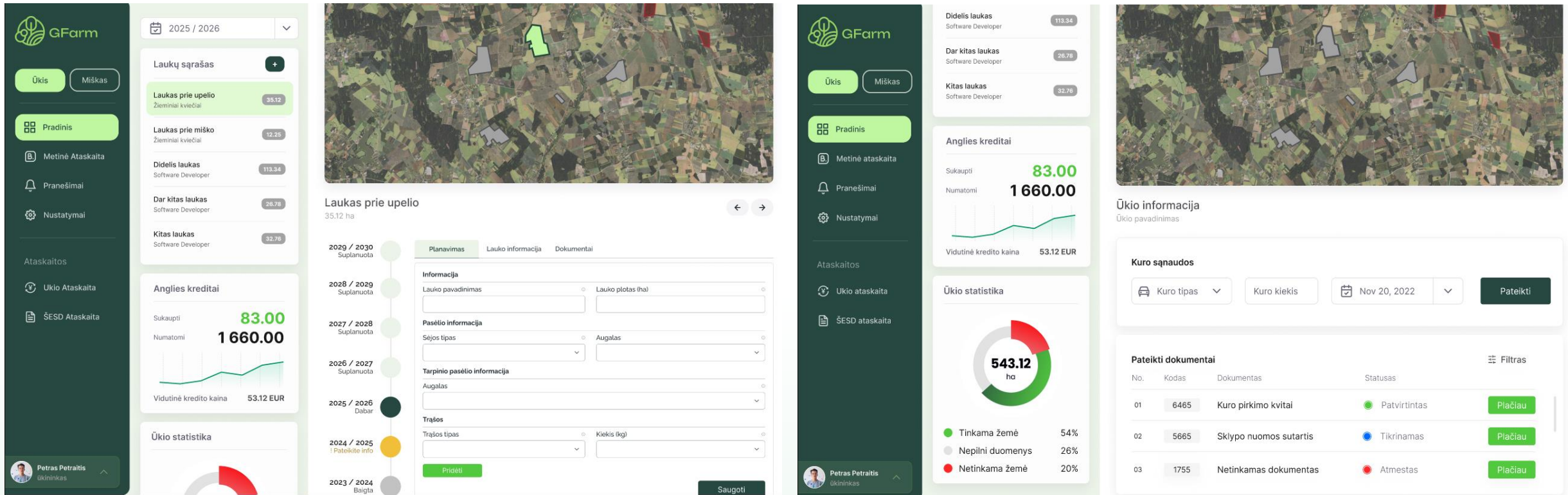
Engage policy makers and other stakeholders to develop and adapt Lithuania's national GHG assessment and Carbon Removal Certification strategy, identify future regulatory requirements, processes, needs and responsibilities, including the incentives for farmer behavioral change



Co-funded by
the European Union



4. AREA MONITORING & CARBON CREDITS SYSTEM



The screenshot displays the GFarm web application interface, which is divided into several sections for area monitoring and carbon credits management.

Left Sidebar (Navigation):

- Úkis (Fields)
- Miškas (Forests)
- Pradinis (Initial)
- Metinė Ataskaita (Annual Report)
- Pranešimai (Notifications)
- Nustatymai (Settings)
- Ataskaitos (Reports)
- Ūkio Ataskaita (Farm Report)
- ŠESD Ataskaita (GHG Report)

Main Content Area (Left Panel):

- Calendar: 2025 / 2026
- Laukų sąrašas (Fields List):
 - Laukas prie upelio (35.12)
 - Laukas prie miško (12.25)
 - Didelis laukas (113.34)
 - Dar kitas laukas (26.78)
 - Kitas laukas (32.78)
- Anglies kreditai (Carbon Credits):
 - Sukaupti: 83.00
 - Numatomi: 1 660.00
 - Vidutinė kredito kaina: 53.12 EUR
- Ūkio statistika (Farm Statistics):
 - Tinkama žemė: 54%
 - Nepilni duomenys: 26%
 - Netinkama žemė: 20%

Main Content Area (Center Panel):

- Aerial map showing field boundaries.
- Laukas prie upelio (35.12 ha)
- Timeline for planning (2023/2024 to 2029/2030).
- Form fields for field information, crop type, and area.
- Buttons: Pridėti (Add), Saugoti (Save).

Main Content Area (Right Panel):

- Summary of field types:
 - Didelis laukas: 113.34
 - Dar kitas laukas: 26.78
 - Kitas laukas: 32.78
- Anglies kreditai (Carbon Credits):
 - Sukaupti: 83.00
 - Numatomi: 1 660.00
 - Vidutinė kredito kaina: 53.12 EUR
- Ūkio statistika (Farm Statistics):
 - 543.12 ha
 - Tinkama žemė: 54%
 - Nepilni duomenys: 26%
 - Netinkama žemė: 20%
- Ūkio informacija (Farm Information):
 - Kuro sąnaudos (Fuel Consumption):
 - Kuro tipas (Fuel type)
 - Kuro kiekis (Fuel amount)
 - Nov 20, 2022
 - Pateikti (Submit)
 - Pateikti dokumentai (Submitted Documents):

No.	Kodas	Dokumentas	Statusas	Plaćiau
01	6465	Kuro pirkimo kvitai	Patvirtintas	Plaćiau
02	5665	Sklypo nuomos sutartis	Tikrinamas	Plaćiau
03	1755	Netinkamas dokumentas	Atmestas	Plaćiau

Bottom Bar (User Profile):

- Petras Petraitis (User Name)
- Ūkininkas (Farmer)

4. CARBONDIGIPARD PROJECT



Erasmus+

Reducing Carbon Footprint in IPARD Investments

Methodology to calculate / evaluate carbon footprint

Carbon calculation tool

IPARD projects carbon map

Demonstrations & Trainings

E-learning platform

Policy recommendations




Thank you for Your attention



National Paying Agency under the
Ministry of Agriculture

 Blindžių Str. 17, 08111 Vilnius

 (+370 5) 252 6999

 info@nma.lt



www.nma.lt

